

# THE ELEVATE PACKAGE

---



ALESSANDRO FARINA  
Interior Design Studio London



### **ELEVATE PACKAGE** – Bespoke Interior Design Experience

A comprehensive, hands-on design service for those seeking a cohesive, highly personalized, and elevated interior. This package ensures every detail is thoughtfully curated and seamlessly executed.

#### **What's Included:**

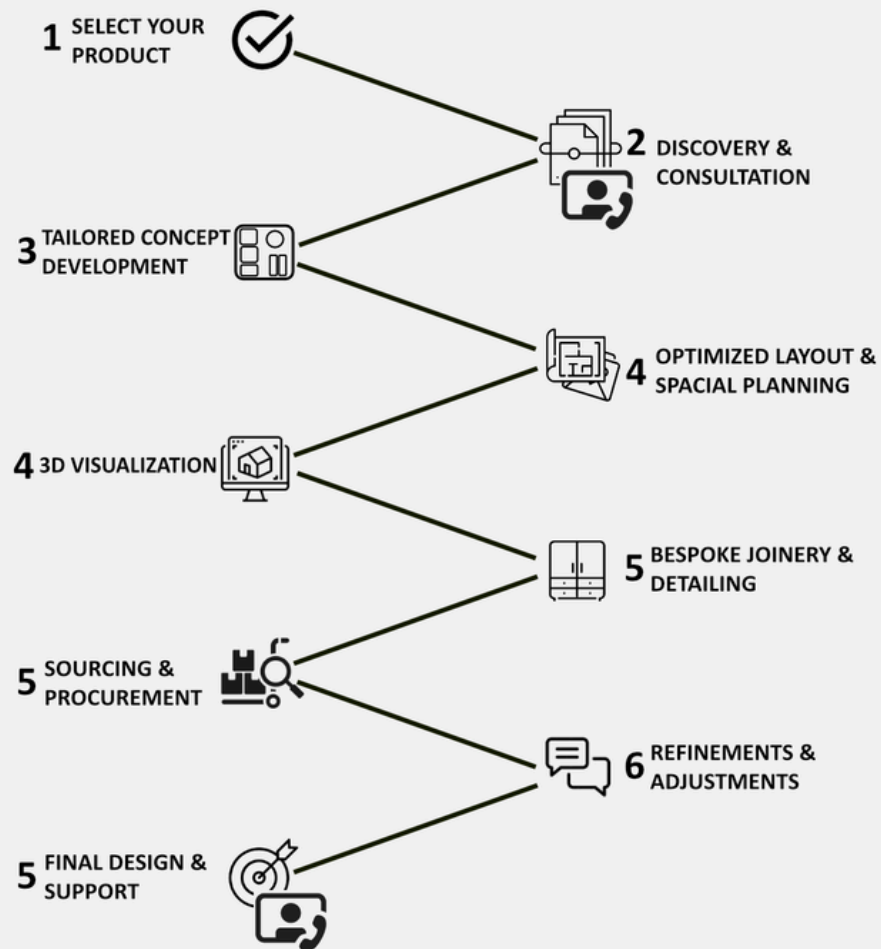
Everything in the **Essential Package** plus:

- **3D Concept Visualizations** : 2 views included (additional views available)
- **Custom Furniture & Built-in Joinery Design – Tailored solutions for space optimization**
- **Sourcing & Procurement Assistance – Guidance in selecting and acquiring the best pieces**
- **Coordination with Trades & Suppliers – Ensuring smooth execution of the design**
- **Styling & Finishing Touches – Expert curation of décor elements for a polished result**



ALESSANDRO FARINA  
Interior Design Studio London

## STRESS-FREE PROCESS



## HOW IT WORKS

- 1. Select Your Package :** Choose the Elevate Design Package on our website or via direct consultation.
- 2. Discovery & Consultation :** Receive a digital welcome kit and schedule an in-depth video consultation (75 min) to discuss your vision, lifestyle, and spatial needs.
- 3. Tailored Concept Development :** Explore curated mood boards, material palettes, and distinct design directions aligned with your style.
- 4. Optimized Layout & Spatial Planning :** Review detailed floor plans, electrical/lighting plans and furniture arrangements designed for flow, function, and balance.
- 5. 3D Visualizations :** Experience your space through photorealistic renderings, offering a clear preview of the final design.
- 6. Bespoke Joinery & Detailing :** Custom-designed furniture and built-in elements are refined to fit seamlessly within your space.
- 7. Curated Sourcing & Procurement :** Receive a premium selection of furniture, lighting, and decor sourced from trusted suppliers.
- 8. Refinements & Adjustments :** Provide feedback and enjoy up to two revisions to ensure every detail is perfected.
- 9. Final Design Package & Implementation Support :** Receive a comprehensive design plan, including sourcing details, styling recommendations, and optional support for installation.



ALESSANDRO FARINA  
Interior Design Studio London

## MOOD BOARD



POLISHED SLATE

F&B DEAD FLAT RAILINGS

F&B DEAD FLAT BLACKENED

OAK NATURAL

### Lighting/Mood

Shelving's integrated LED strips and the built-in fireplace will create a relaxing setting through warm, layered lighting

### Materials/Palette

The dominant use of Farrow & Ball's "Blackened" paint will contribute to a spacious and luminous ambiance. This will be complemented by accents of F&B "Railings" and slate. **Materials** such as oak, will further elevate the space, creating an inviting and warm atmosphere by leveraging natural elements

### Joinery/Furniture

The joinery and furniture in this space will be designed to embody a modern timeless style, blending clean lines with warm, natural finishes, subtle textures and materials that complement the room's overall aesthetic.

### Natural features

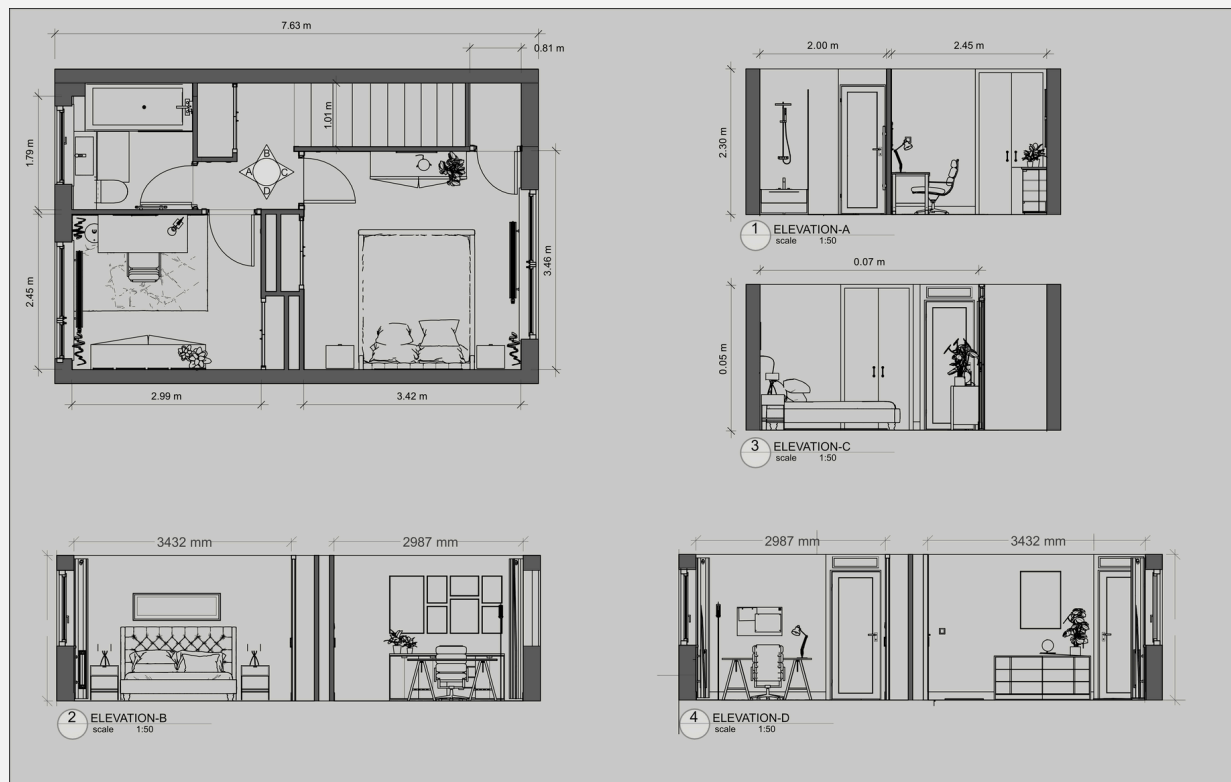
Plants, not only materials, enhance small spaces, with aloe and lilies notably filtering the air and improving mood.

## TAYLORED CONCEPT DEVELOPMENT

At this stage, we refine the overarching vision for your space, balancing aesthetics with practicality. You'll receive a curated mood board and material palette, presenting distinct style directions that align with your taste and lifestyle. We consider textures, color harmonies, and finishes that define the atmosphere, ensuring a seamless blend between existing architectural elements and new design interventions. This step allows us to set the foundation for a space that feels both **cohesive and deeply personal**.



ALESSANDRO FARINA  
Interior Design Studio London



## OPTIMIZED LAYOUT & SPACIAL PLANNING

A well-designed space begins with intelligent planning. **We develop a detailed floor plan and furniture layout, ensuring optimal flow, functionality, and proportion.** Whether it's an open-plan living area, a multi-room configuration, or a compact space requiring smart solutions, every square meter is maximized. The layout plan also considers sightlines, movement patterns, and the interaction between furnishings, allowing for a space that is both aesthetically balanced and highly livable.



ALESSANDRO FARINA  
Interior Design Studio London



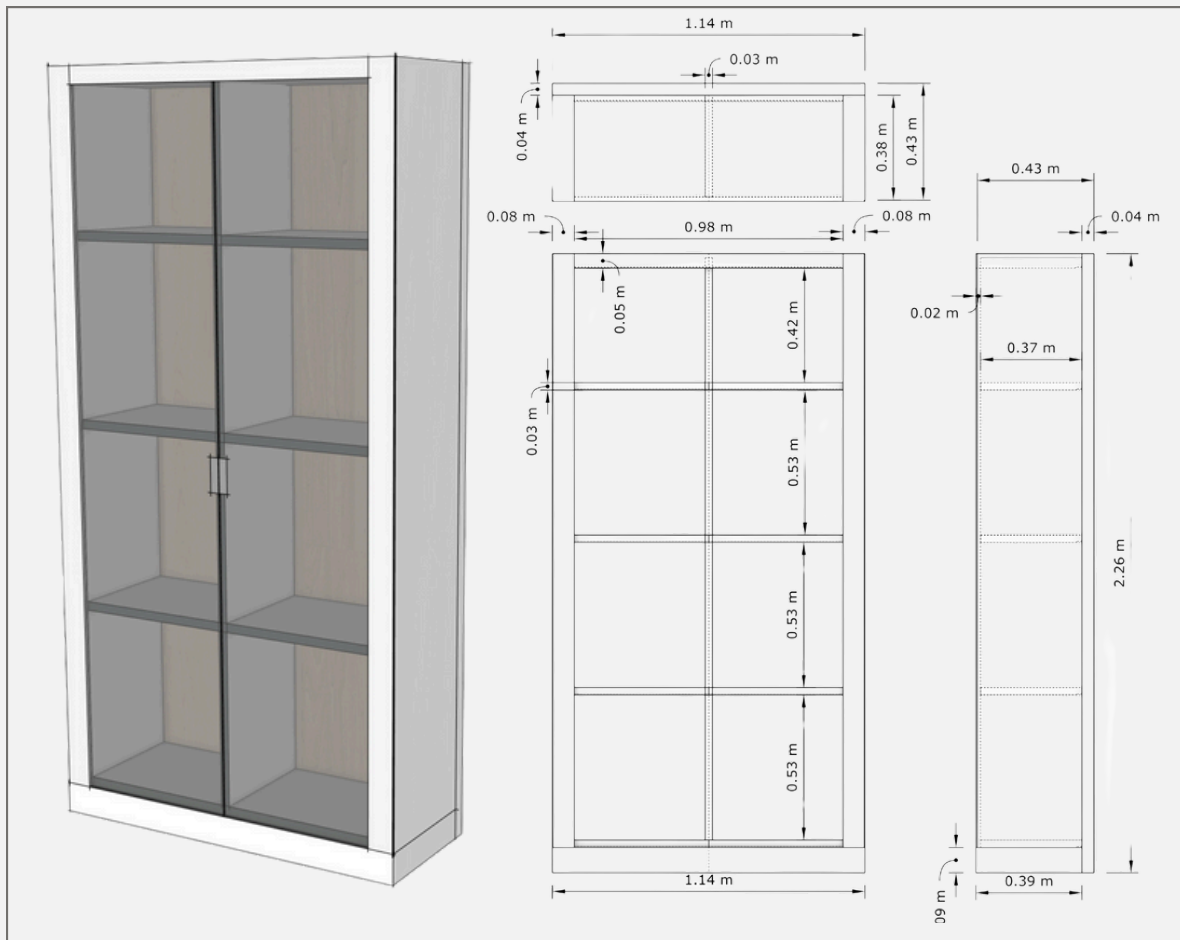


### 3D VISUALIZATION

Visualizing your future space is essential to understanding how all design elements come together. Our photorealistic 3D renderings provide a tangible preview of the final outcome, capturing lighting, textures, and spatial depth with remarkable accuracy. **You'll see your furniture, materials, and finishes in place before committing**, allowing for fine-tuning and adjustments. With multiple angles and a guided walkthrough, this immersive experience transforms concepts into a reality you can see and feel.



ALESSANDRO FARINA  
Interior Design Studio London



## **BESPOKE JOINERY & DETAILING**

Custom-designed elements are the key to a tailored, high-end interior. Whether it's built-in storage, architectural shelving, or a statement furniture piece, we craft solutions that fit seamlessly within your space. Detailed technical drawings and material specifications ensure that every element is designed with precision, enhancing both aesthetics and functionality. **This level of customization allows for a truly one-of-a-kind interior, tailored to your lifestyle and spatial needs.**



ALESSANDRO FARINA  
Interior Design Studio London

# PRICING

Our pricing reflects the value of our bespoke approach, attention to detail, and seamless design process. As a small, dedicated studio, we offer high-end expertise with a personalized, hands-on experience tailored to your lifestyle.

✓ **Package Price: Starting at £3,700 per room (up to 25 sqm; additional sqm priced separately), inclusive of all listed services.**

✓ **Full Home Design: The Elevate Package is scalable, making it ideal for single-room transformations, multi-room makeovers, or comprehensive whole-home projects.**

✓ **Custom Add-ons: Enhance your design with tailored services:**

- **Additional 3D Renderings: £300 per extra view**
- **Lighting & Technology Integration Plans: £500 – £1,000**
- **Art & Accessory Curation: £250 – £500**

✓ **Further customizations and additional revisions beyond the package scope are available at £75/hour.**

## **Why Choose Us?**

- **Tailored for Urban Living:** Designs that prioritize efficiency, comfort, and modern city lifestyles.
- **Transparent Pricing:** Clear upfront costs with no surprises.
- **Personalized Attention:** A boutique studio approach ensures every detail reflects your vision.

**Let's start transforming your space today!**



ALESSANDRO FARINA  
Interior Design Studio London